

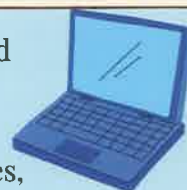
## What is Myopia?

Myopia is also known as nearsightedness. A person with myopia can see clearly up close – when reading a book or looking at a phone – but words and objects look fuzzy on a blackboard, on television or when driving. Myopia occurs when the eyeball grows too quickly in childhood, or starts growing again in adulthood.

## Children and Myopia



Between standard school learning and distance learning, children are constantly using computers. Add on videogames, television and cell phones, and children are getting a lot of screen time which can cause myopia to worsen.



## Associated Disorders

As myopia progresses, it can cause several disorders that affect the health of the eye, a few of those disorders are listed below:

Retinal Detachment- Retinal detachment occurs when the retina pulls away from the blood vessels at the back of the eye that provide oxygen and nutrients to the eye.

Glaucoma- Glaucoma is a group of eye diseases that affects the optic nerve. Worsening or progression cause cause loss of peripheral vision.

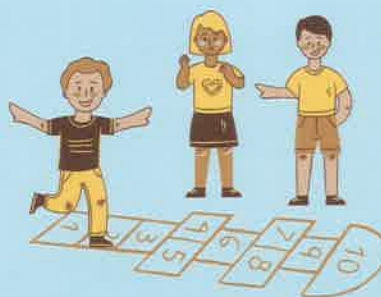
Cataracts- Cataracts are dense clouding in the lens of the eye.

Maculopathy- Maculopathy is the degeneration of the macula, the central part of the retina which can cause loss of central vision.



Greater risk if 1 or both parents have myopia.

Decreased time outdoors can worsen myopia



# Myopia Management



**DRS EYECARE  
CENTER**

4423 Route 130  
Burlington, NJ 08016

Tel: 609-386-0202

Fax: 609-386-5927

Web: [drseyecarecenter.com](http://drseyecarecenter.com)

# Our Services



## Myopia Management with Contacts

This service involves having a Contact Lens Fitting. The doctor will take measurements of the eye to ensure comfort and a proper fit. The doctor will use a multifocal contact lens containing a myopia control ring. When worn overtime, this lens helps to slow the progression of myopia by focusing the light entering the eye and giving an extended depth of focus. These lenses are daily-wear and disposable. This service is NOT covered by insurance.

<u>Steps:</u>	<u>Price</u>
1. Consultation	
2. Contact Lens Fitting	
3. 1 Week Follow Up	\$500
4. 3 Month Follow Up	
5. 6 Month Follow Up	

**Contacts:** Price will vary depending on the contact lenses. Contact lenses are NOT included in the price of the fitting.



## Low Dose Atropine

Low-Dose Atropine can be used as monotherapy or in conjunction with contacts to manage myopia. This is an appropriate option for children that are not quite ready for contacts, as it may keep the eye from lengthening too much. One drop of Low-Dose Atropine should be administered by an adult into each eye. We recommend administering the drops at night as the drops do cause a very small amount of dilation.

<u>Steps:</u>	<u>Price*</u>
1. Consultation	
2. 4 Month Follow Up *	
3. 8 Month Follow Up *	

\*For these visits, medical insurance will be billed. You will be responsible for any medical co-pays or deductibles. Without insurance, these visits will be \$125.



## Imprimis Rx

Imprimis Rx is a specialty pharmacy that ships to all 50 states.

- 1 bottle- \$59\*\*
- 2 bottles-\$99
- 3 bottles-\$119

\*\*Pricing is an estimate for a 5mL bottle (1 month supply)



## Corneal Refractive Therapy (OrthoK)

Corneal reshaping technology. Can be used for myopia control.

Orthokeratology, also known as Ortho-K, is a method for temporarily reshaping the cornea with custom contact lenses in order to correct myopia. These specially-designed contact lenses will reshape the cornea (the front surface of the eye) as you sleep, allowing your child to see clearly the next day without any lenses. Studies have found that Ortho-K reduces the lengthening of the eyeball (a key factor in myopia progression) by 43% in children when compared to similar children who only wore regular eyeglasses for myopia correction.

<u>Steps:</u>	<u>Price</u>
1. Consultation	
2. Contact Lens Fitting	\$1,500
3. 1 Week Follow Up	(Includes Lenses)
4. 6 Month Follow Up	