

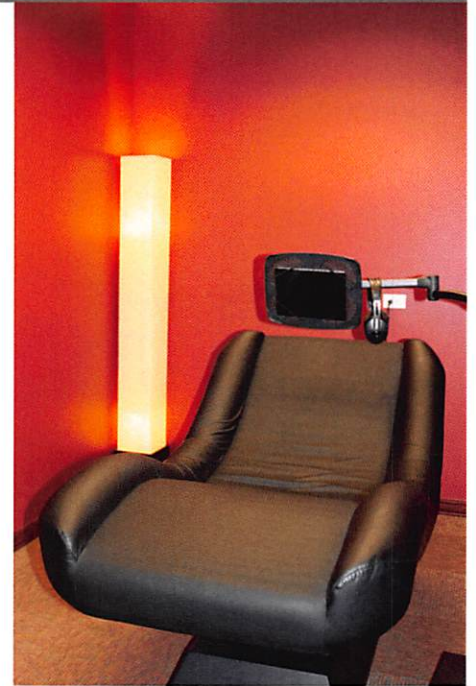
Sensory Cradle

Vision



Auditory

Vestibular



What is Sensory Cradle Program ?

The Sensory Cradle Program is designed to help adults and children meet their visual, cognitive, academic and developmental goals. The Sensory Cradle Program incorporates Vision, Proprioception and Auditory Sensory Modalities to help re-train the brain. This sensorimotor integration technique has helped individuals with the following conditions:

Autism

Sensory Integration Disorder

Acquired Brain Injury

Behavioral Problems

ADD/ADHD

Traumatic Brain Injury

Developmental Delays

Anxiety/Depression

Trauma/PTSD

Balance/Coordination

Vision/Concentration

The Sensory Cradle Program is a 30-day process that consists of the three phases. The first phase includes one-hour sessions in the clinic for 12 consecutive days. The second phase is done at home and includes using a programmed light instrument for 18 days. Next the patients will have follow up appointments with their clinician. Additional recommendations will be made at this time. It is important to note that some of the positive clinical outcomes unfold gradually. The peak time for results is around 3 months; however, some may take as long as 18 months.