

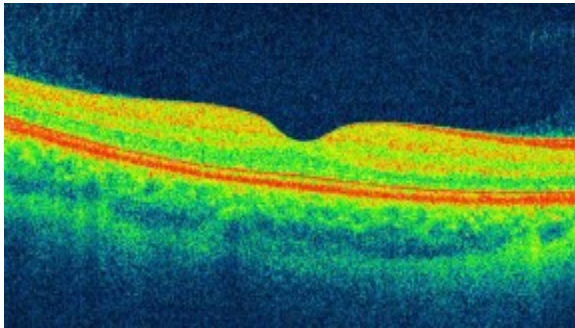


## Advanced Wellness Screening Options

***Our doctors recommend the following two screening tests prior to your eye exam***

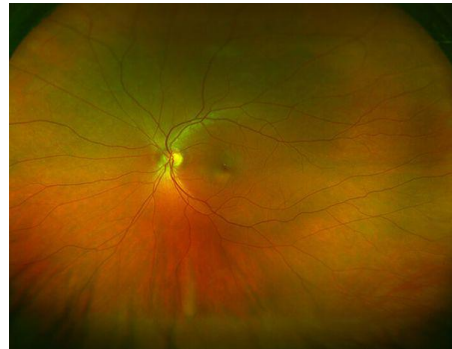
In order to provide the most comprehensive view of all the layers of the eye, our doctors recommend the following state-of-the-art imaging technology. Both of these tests provide the most thorough view of the eye and surrounding tissues. This provides the best opportunity to detect ocular diseases and conditions, such as **glaucoma, macular degeneration, high blood pressure damage, and diabetic changes**. Although dilation is not needed to perform either of these tests, the doctor may still wish to dilate your eyes as part of your exam if necessary.

### Topcon Maestro OCT Screening Scan



- 3D cross-sectional scan of the retina
- Detailed layer-by-layer view of the retina
- Allows the doctor to see beneath the retina, where signs of disease first appear
- Images stored for comparison over time

### Optomap (Optos) Retinal Imaging



- Provides an ultra-widefield 200° retinal view
- Allows the doctor to view the entire retina without dilation
- Avoids uncomfortable side effects of dilation – blurred vision, light sensitivity
- Images stored for comparison over time

- Yes, I want both OCT Screening Scan and Optomap Retinal Imaging for \$49**
- Yes, I only want OCT screening scan for \$29
- Yes, I only want Optomap Retinal Imaging for \$29
- No, I elect to decline OCT Screening Scan and Optomap Retinal Imaging and have my eyes dilated at no charge. I understand I will have *blurred vision and light sensitivity* for 4-6 hours
- No, I elect to decline OCT Screening Scan, Optomap Retinal Imaging, and dilation. I understand that the doctor will not be able to fully assess the health of the eyes during the exam