

Cliradex®

The Essential, All Natural & Effective Way to Clean Lashes, Eyelids & Face

What happens when you put a team of world-renowned ocular scientists and researchers together with deep expertise in molecular biology onto the ever increasing problem of irritated, itchy dry eyes? You get **Cliradex®** - the proprietary, all natural cleansing solution developed by the scientists at BioTherapeutix.

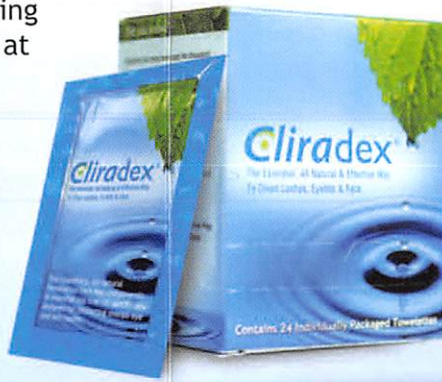
Essential oils have been used for thousands of years for their natural antiseptic, antifungal and holistic properties. Unlike man-made chemicals or fatty oils, essential oils are the “essence” of the plant and provide vitality for human life in a natural way.



Talk to your doctor today to find out if **Cliradex®** is right for you.

What is Cliradex®?

Cliradex® is the result of a dedicated pursuit to create an all natural solution that effectively cleans lashes, eyelids and the face without any harmful chemicals or preservatives.



Cliradex® uses a proprietary, all natural formulation of tea tree oil specifically designed for cleaning these sensitive areas of the face.

The components of **Cliradex®** are naturally antiseptic, antimicrobial and antifungal. These components have been studied extensively around

the world and have demonstrated numerous eye, skin and overall health benefits.

What Should I Know Prior to Using Cliradex®?

It is important to use **Cliradex®** as directed, or as recommended by your physician. Avoid direct contact of the moist towelette with the surface of the eye to avoid irritation. If **Cliradex®** solution comes in direct contact with your eyes, rinse thoroughly with water or saline solution.



Unlike lid cleansers where you traditionally wash off the formulation, it is important to allow **Cliradex®** time to dry on the eye lid and surrounding area.

Please review the **Cliradex®** product insert for more details about how **Cliradex®** should be used, or visit www.cliradex.com/videos to see a video presentation for proper instructions for use.

Scan QR Code
for video information
and instructions for use



855.4.Cliradex

Cliradex.com



Before Use



After Use

For optimal eye and skin health, it is recommended that people who suffer from eye conditions like blepharitis, ocular rosacea, dry eye, conjunctivitis and other eye disorders consider the following steps in addition to using **Cliradex®** to ensure best results:

- Discard used facial make-up
- Wash hair, face, nostrils, the external ear and the neck with soap daily
- Wash bedding and pillow cases in hot water and dry in a heated dryer immediately before beginning a **Cliradex®** regimen, and once a week thereafter
- Keep pets away from sleeping surfaces
- If a spouse has complaints of similar eye irritation, apply the same regimen



For more information about **Cliradex®**, please visit www.cliradex.com



855.4.Cliradex • Doral, FL



Talk to your doctor today to find out if **Cliradex®** is right for you.

Proudly Made in the USA

Rev. B
CX-003

Scan QR Code for video information and instructions for use



Cliradex®

The Essential, All Natural & Effective Way To Clean Lashes, Eyelids & Face

Patient Information

The proprietary, all natural formulation from key components of essential tea tree oil specifically designed for promoting overall eye and skin health

Scan QR Code for video information and instructions for use

